

### 3 Kaikohe to Waipapa via Waitangi



#### ROUTE DESCRIPTION

Mangakahia Road, SH12, Ohaeawai, Pakaraka, Moerewa, Kawakawa, SH11, Paihia, Waitangi Treaty Grounds, Kerikeri, Waipapa. Runs in reverse for the return journey.

#### PLEASE CLEARLY SIGNAL THE DRIVER TO STOP.

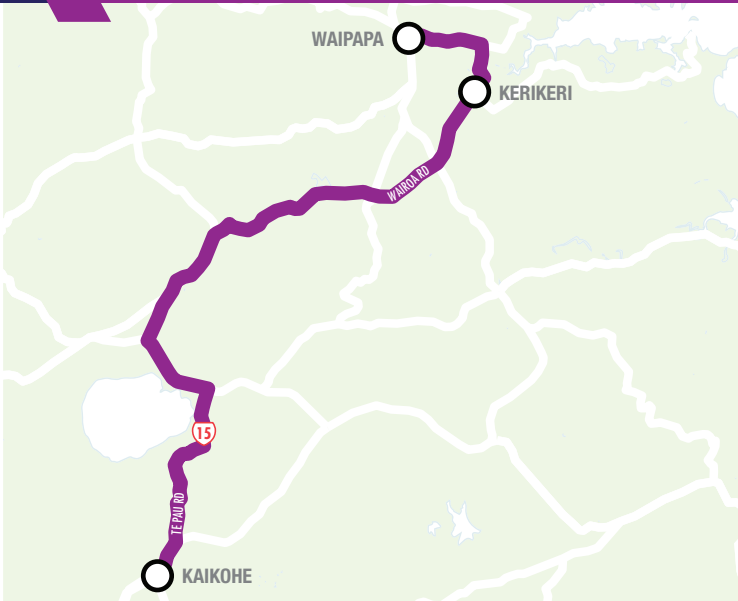
If you would like to be picked up from somewhere else along the route, please speak to your driver to arrange a safe stopping place.

#### FARES

	KAIKOHE	OHAEAWAI	MOEREW A	KAWAKAWA	PAIHIA	KERIKERI	WAIPAPA
KAIKOHE		\$3.00	\$4.00	\$6.50	\$8.50		
OHAEAWAI	\$3.00		\$3.00	\$4.00	\$6.50		
MOEREW A	\$4.00	\$3.00		\$2.00	\$6.00		
KAWAKAWA	\$6.50	\$4.00	\$2.00		\$5.50		
PAIHIA/ WAITANGI	\$8.50	\$6.50	\$6.00	\$5.50		\$3.00	\$3.50
KERIKERI		\$8.00	\$7.00	\$6.50	\$3.00		\$1.00
WAIPAPA		\$8.50	\$7.50	\$7.00	\$3.50	\$1.00	



### 2 Kaikohe to Kerikeri/Waipapa



#### ROUTE DESCRIPTION

Kaikohe, via Te Pua Rd, State Hwy, Settlers Way, State Hwy, Wairere Rd, Wairoa Rd (airport), Kerikeri Rd (to Cobham Rd stop) Heritage bypass, Waipapa Rd, to Clinic Lane. Runs in reverse for the return journey.

#### PLEASE CLEARLY SIGNAL THE DRIVER TO STOP.

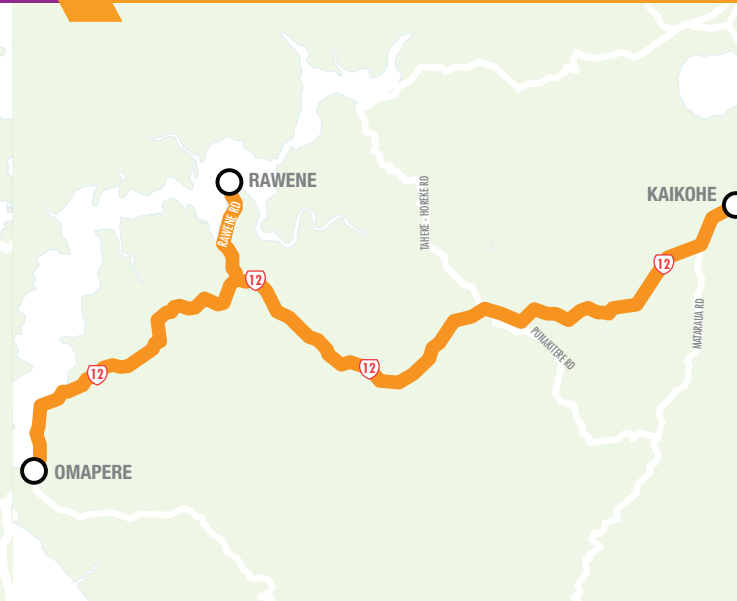
If you would like to be picked up from somewhere else along the route, please speak to your driver to arrange a safe stopping place.

#### FARES

	KAIKOHE	OKAIHAU	KERIKERI	WAIPAPA
KAIKOHE		\$3.00	\$6.00	\$7.50
OKAIHAU	\$3.00		\$3.00	\$5.00
KERIKERI	\$6.00	\$3.00		\$2.00
WAIPAPA	\$7.50	\$5.00	\$2.00	



### 1 Omapere/Opononi to Kaikohe



#### ROUTE DESCRIPTION

Omapere (Service Station) via Rawene Junction, (Rawene Ferry Terminal on request) to Kaikohe (2 Mangakahia Rd).

#### PLEASE CLEARLY SIGNAL THE DRIVER TO STOP.

If you would like to be picked up from somewhere else along the route, please speak to your driver to arrange a safe stopping place.

#### FARES

	ONE WAY	RETURN
OMAPERE TO KAIKOHE	\$8.00	\$16.00
WAIMA TO KAIKOHE	\$6.00	\$12.00

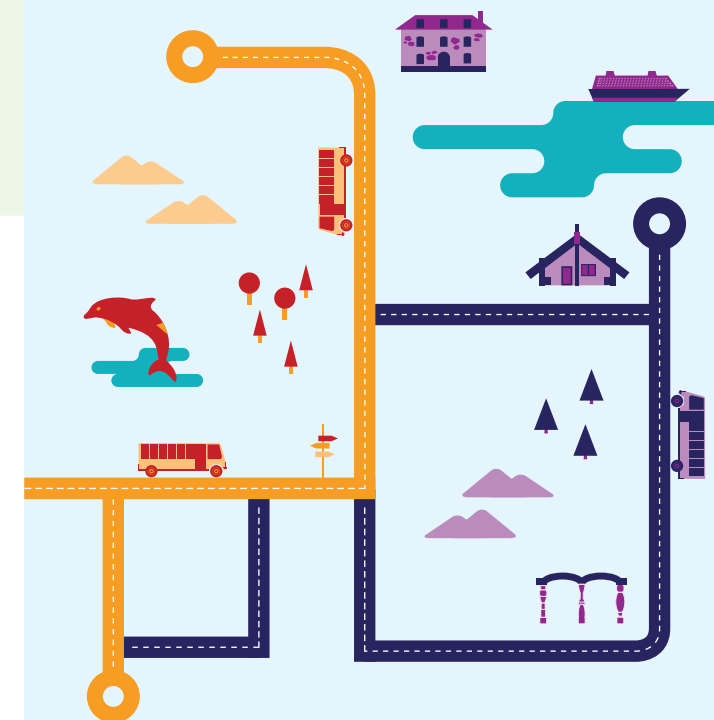
See Kaikohe Link 2 for Kerikeri/Waipapa prices

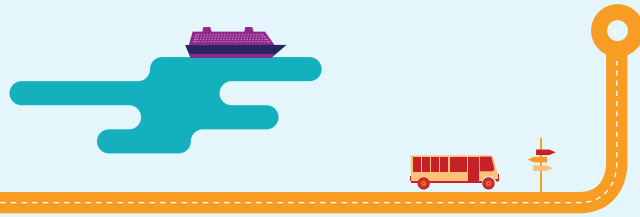


### Omapere/Opononi to Kaikohe

### Kaikohe to Kerikeri/Waipapa

### Kaikohe to Waipapa via Waitangi





## Omapere/Opononi to Kaikohe

1

**Operator:** Hokianga Express Charters

**SERVICE OPERATES TUESDAY, THURSDAY**

### MORNING

8.50am	Departs	Omapere Omapere GAS Service Station
9.00am	Departs	Hokianga I-Site
9.15am	Departs	<b>Rawene Junction</b> (Pick up at Rawene 9:20am by prior arrangement. Ring or Text Peter Clark 021 405 872 prior to 8.30am)
9.30am	Departs	Goldfish Corner Corner Waima Valley Road / SH12
9.45am	Departs	Taheke Corner Taheke Road / SH12
9.55am	Arrives	<b>Kaikohe</b> Kaikohe Bus Company (Transfer here to Kerikeri/Waipapa, Mid North Link 2 departs 10.00am)

### AFTERNOON

2.15pm	Departs	<b>Kaikohe</b> Kaikohe Bus Company
2.25pm	Departs	Taheke Corner Taheke Road / SH12
2.35pm	Departs	Goldfish Corner Corner Waima Valley Road / SH12
2.55pm	Departs	<b>Rawene Junction</b> (Pick up at Rawene 9:20am by prior arrangement. Ring or Text Peter Clark 021 405 872 prior to 8.30am)
3.05pm	Departs	Hokianga I-Site
3.15pm	Arrives	Omapere Omapere GAS Service Station

## Kaikohe to Kerikeri/Waipapa

2

**Operator:** Kaikohe Bus Company

**SERVICE OPERATES TUESDAY, THURSDAY**

### MORNING

10.00am	Departs	<b>Kaikohe</b> Kaikohe Bus Co. 3 Mangakahia Road (Transfer from Hokianga Link here to Kerikeri)
10.10am	Departs	Okaihau Hall
10.30am	Departs	Kerikeri Cobham Road bus stop
10.45am	Arrives	Waipapa Klinac Lane

### AFTERNOON

1.15pm	Departs	Waipapa Klinac Lane
1.30pm	Departs	Kerikeri Cobham Road bus stop (To Kaikohe via Wairoa Road past airport)
1.55pm	Departs	Okaihau Hall
2.15pm	Arrives	<b>Kaikohe</b> Kaikohe Bus Company 3 Mangakahia Road (Transfer to Hokianga Link for Opononi/Omapere, departs 2.15pm)



## Kaikohe to Waipapa via Waitangi

3

**Operator:** Kaikohe Bus Company

**SERVICE OPERATES TUESDAY, THURSDAY**

### MORNING

10.00am	Departs	<b>Kaikohe</b> Kaikohe Bus Company 3 Mangakahia Road (Transfer from Hokianga Link here to Paihia and Waitangi)
10.10am	Departs	Ohaeawai Te Corner
10.20am	Departs	Moerewa Town Centre (between BP and shops)
10.30am	Departs	Kawakawa Bus stop outside Community Link (Hospital and InterCity stops by prior arrangement)
10.50am	Departs	Opuu Opuu General Store
11.00am	Departs	Paihia Ferry Terminal Building Bus Bay
11.05am	Departs	Waitangi Waitangi Treaty Grounds (PLEASE: No smoking on Treaty Grounds)
11.45am	Departs	Kerikeri Cobham Road bus stop
12.00pm	Arrives	Waipapa Klinac Lane

### AFTERNOON

1.45pm	Departs	Waipapa Klinac Lane
2.00pm	Departs	Kerikeri Cobham Road bus stop
2.30pm	Departs	Waitangi Waitangi Treaty Grounds (PLEASE: No smoking on Treaty Grounds)
2.35pm	Departs	Paihia Ferry Terminal Building
2.45pm	Departs	Opuu Opuu General Store
2.55pm	Departs	Kawakawa Bus stop opposite Community Link
3.05pm	Departs	Moerewa Town Centre, Plunket Street
3.15pm	Departs	Ohaeawai Te Corner
3.25pm	Arrives	<b>Kaikohe</b> Kaikohe Bus Company 3 Mangakahia Road



**PLEASE CLEARLY SIGNAL THE DRIVER TO STOP.**

If you would like to be picked up from somewhere else along the route, please speak to your driver to arrange a safe stopping place.



Free travel for SuperGold Card holders between 9am and 3pm.

**ALL BUSES ARE SMOKE FREE AT ALL TIMES**



OPERATED BY

**Hokianga Express Charters**

Phone Peter Clark  
P: 021 405 872

**KAIKOHE BUS COMPANY**

3 Mangakahia Road,  
Kaikohe 0474

P: 09 401 0193  
F: 09 401 0190

E: kaikohebusco@gmail.com

CONTRACTED TO

**Northland**  
REGIONAL COUNCIL

36 Water Street,  
Private Bag 9021,  
Whangarei 0148

P: 0800 002 004  
P: 09 470 1200  
F: 09 470 1202  
E: citylink@nrc.govt.nz  
www.nrc.govt.nz

WITH FUNDING FROM



For service updates and more information visit:  
[www.buslink.co.nz](http://www.buslink.co.nz)

